

Magnetic field therapy

Bioresonance

Bioinformative Medicine

Physics

Our cosmos – all living organisms, human beings, animals and plants – consists of only a one billionth part of solid matter, the atomic nuclei and the electrons around them.

In between is a lot of space that seems to be “empty”. This “empty space” is filled with electromagnetic waves.

These waves are in contact with each other and also with the outside world. They communicate.

Dr. W. Ludwig's (physician, 1927 – 2004) ambition was to generate with a device electromagnetic waves that the body will understand. They have to be **natural as in undisturbed nature** to be able to cause a reaction in the body. Therefore he did research about the environmental signals that surround us naturally (Schumann, Geomagnetic and Solar frequencies). His doctoral research study was about the influence of electromagnetic fields on the nervous system.



What does electromagnetic field therapy / Bioinformative Medicine mean and what is special about Dr. Ludwig's® AMS-devices?

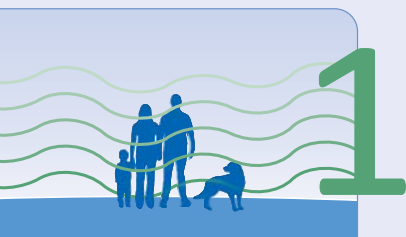
Read about the characteristics of pulsating electromagnetic fields and how they can be used:

- Some **physics** background
- Physiological **environmental signals**: Schumann, Geomagnetic and Solar frequencies – signals that surround us naturally
- **Qualitative characteristics** of physiologically effective electromagnetic field devices
- **Possibilities for use** of magnetic field therapy

We deliberately set aside a detailed scientific explanation of the effectiveness of electromagnetic fields in the course of this brochure – but if you are interested you can contact us for further information.

Environmental Signals

In an intact environment, we are naturally surrounded by different oscillations, waves and frequencies that our organism is used to:

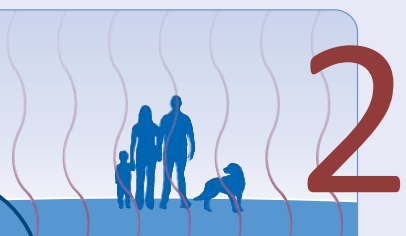


Schumann Frequency

1952 discovered by the physician Winfried Otto Schumann.

This is a frequency that is permanently maintained between the earth's surface and the ionosphere through electrical discharge (thunderstorms and lightning). The result is a so called transversal magnetic wave with a fundamental frequency of **7,8 Hz – the Schumann frequency**. The range of its harmonics even reach the megahertz area.

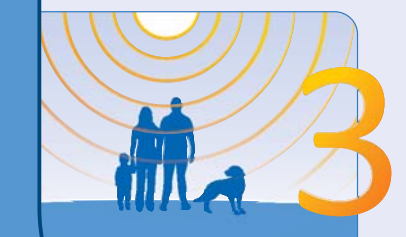
A part of the brain of all mammals, the hippocampus, also oscillates with 7,8 Hz. Among other things the hippocampus is important for concentration and alertness.



Geomagnetic Frequencies

These are the natural oscillations of **64 trace elements** such as ferrite, natrium, calcium, etc. that are contained in the earth's crust. Each of these trace elements has its own characteristic oscillation pattern. The natural terrestrial magnetic field receives and transfers these oscillation patterns – called “modulation”. Thus in natural surroundings we are permanently in touch with the information of the trace elements.

According to measurements from geologists and medical scientists the earth's crust contains the same trace elements as the erythrocytes, the red blood cells – nearly in the same ratio with each other.



Solar Frequencies

The sun is another source of important signals for us. It has manifold frequency spectra – most of them don't reach the earth's surface.

The atmosphere has two “windows” that let through different kinds of the sun's waves to the earth: **visible light and ultrashort waves**

There is a **corresponding ultrashort wave to every visible light frequency**. These are the Solar frequencies.

Please ask us!

AMS GmbH

Advanced Medical Systems

Hauptstraße 26 • D-97990 Weikersheim

Tel. +49 (0)79 34 / 99 34 89-0

info@ams-ag.de • www.ams-ag.de

Germany



The ancient Traditional Chinese Medicine knew: Organisms need at least two environmental signals, a **Yang-Signal from above (Schumann or Solar frequencies)** and a **Yin-Signal from below (Geomagnetic frequencies)**.

To achieve this **Yin-Yang-Balance**, each of Dr. Ludwig's® devices generates the Schumann frequencies as well as the Geomagnetic frequencies. Additionally **all major devices** and the handheld devices **MEDICUR®**, **MEDICUR®color**, **METRONOM solar** and **METRONOM C** generate the Solar frequencies.

just read a little bit further :)

Environmental Signals

Qualitative Characteristics

To achieve a physiological effect from the generated waves, they must have certain characteristics. Particularly important are the **strength** and the **pulse form of the magnetic field**.

The American physician R. Adey found out that a low field intensity is already sufficient to have a physiological effect. Merely the physiological response threshold has to be reached – a stronger intensity can possibly even be counterproductive. Therefore the **magnetic field strength** of Dr. Ludwig's® devices is very low between 0,2 and 20 μ Tesla.

With the signal of his devices Dr. Ludwig® emulated the same form that nerve cells use to transfer their impulses in order to use a **pulse form** that is known for the body. It is characterized by a fast increase and after that a slow decay.

only one section more

Possibilities for Use

Already in ancient medicine they cured diseases with so called "Magnetite" (natural loadstone). The principle was easy: Magnetic fields can improve the **body's ability for regulation**. Thus they can contribute to stimulation of **self healing processes**.

One of the most important frequencies – if not the most important of all – is the principal value of the Schumann frequencies, 7,8 Hz. It is a neutral frequency, balancing and benefitting concentration. We call it the "well-being frequency". A randomized, double-blind, placebo-controlled study could prove a highly significant effect and pain relief with the frequency 7,8 Hz on knee arthrosis. If you are interested you can ask us for the study.

Generally any frequency can be suitable for application. Some frequencies have proven their value for certain situations. For example there are stimulating or toning frequencies, whereas others are applied for relaxing.

Dr. Ludwig's® **handheld devices** have different **preset programs/frequencies** that you can select from. The **major devices (MEDISEND®super / MEDISEND®super C / MEDISEND®super III)** can be set on any frequency between 0,1 and 1000 Hz. You get specific information on that in the particular product brochures.

One of the characteristics of electromagnetic waves is their ability to receive and transport information. So our device's electromagnetic waves can be used solely as the pure **application signal** in the chosen frequency and additionally as a **carrier wave**. As a carrier wave it can transport exogenous (i.e. homeopathic remedy, Bach Flowers, Schuessler Salt and more) as well as endogenous (body's own) information.

For this purpose the handheld devices have an **ampule holder**. Major devices offer the possibility to connect a beaker (**MEDICUP**) for the transfer of information / substrate transients.

done!